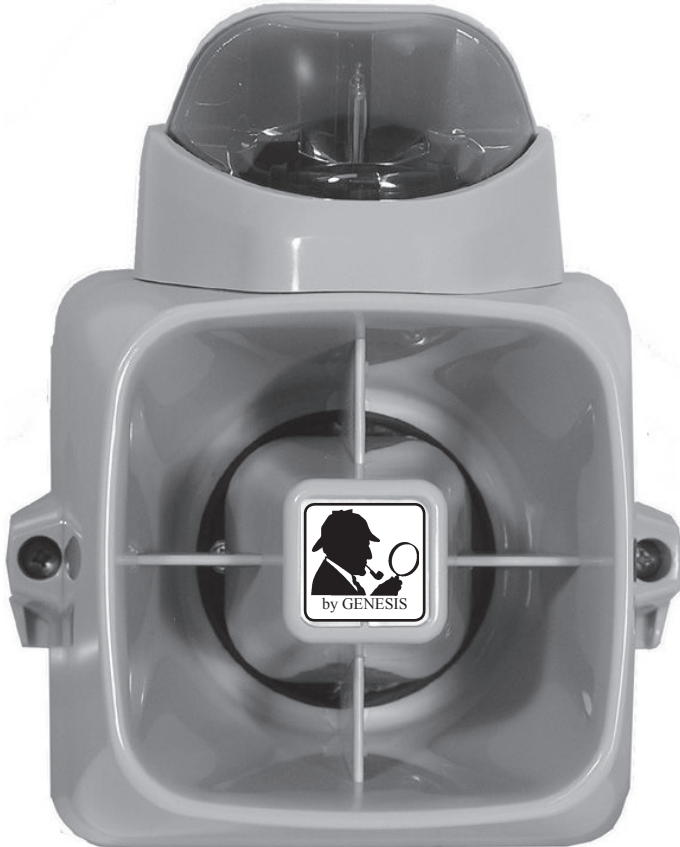




GENESIS INTERNATIONAL, INC.

HORN/STROBE COMBINATION



SHERLOCK HORN AND STROBE

- Self--Contained /Indoor/Outdoor Siren/Strobe
- Sturdy aluminum back plate
- Strong polycarbonate housing
- Dual tamper protection
- 120dB sound output
- Warble sound output
- Mounts directly to wall or 4 " square back box
- Strobe consists of colored mirror and lens
- Available strobe colors: Amber, Blue, Clear and Red

Note: Siren sound quality varies with the power supply. If the power source has a high rippled, siren driver does not create the best sound. Best siren sound should be made with a lower rippled power supply.

Please do not touch electronic components when you install the siren. It may cause damage.

The **SHERLOCK HORN AND STROBE ASSEMBLY** is a durable indoor/outdoor self-contained siren and strobe combination. The full featured siren consists of a single tone that delivers a warble sound output, 120dB output siren driver, and a dual action reed plunger for cover and rear protection. The Horn/Strobe is provided with a strong polycarbonate housing and a sturdy aluminum back plate to prevent warping and cracking. The Horn/Strobe comes completely assembled and ready for installation.

The strobe uses a colored mirror and lens to ensure that the color can be easily distinguished, and is available in amber, blue, clear, or red.

The Horn/Strobe excels in noisy areas such as warehouses, loading docks, print shops, busy production floors, or for indoor/outdoor applications where high quality and high output warning is required.

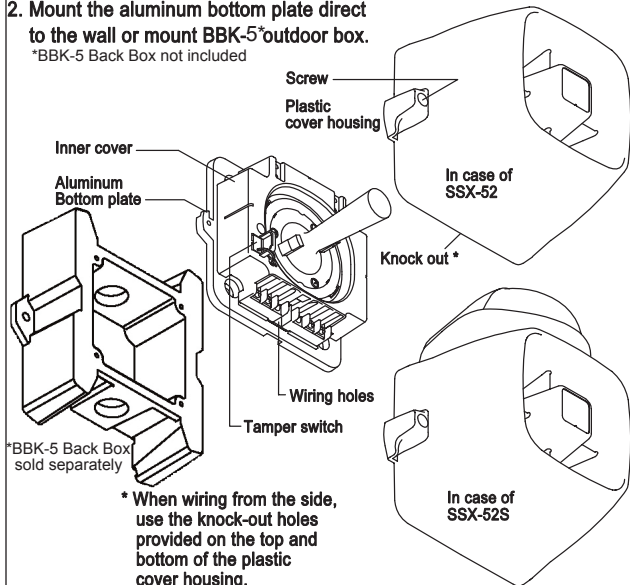
ENCLOSURE RATING	Indoor/Outdoor
DIMENSIONS Inches (mm)	7.08 X 4.37 X 5.79 (180 X 111 X 147)
POWER INPUT	12V DC, 670mA
STARTING VOLTAGE	9.6V DC
OPERATING VOLTAGE	9.6V TO 14.4V DC
SOUND OUTPUT	120dB @ 10ft (3.05M)
FLASHING RATE	20 - 100 Flashes/Min
OPERATING ENVIRONMENT	
TEMPERATURE	-4° - 149°F (-20° - 65°C)
HUMIDITY	0 TO 95% RH Non-Condensing

HORN STROBE ORDER NUMBERS

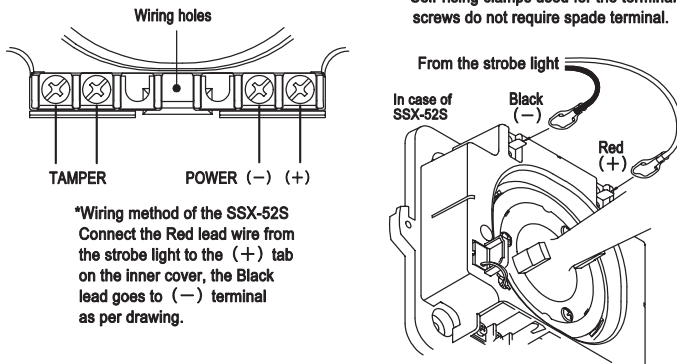
<u>LENS COLOR OPTIONS</u>	<u>PART#</u>
BLUE HORN/STROBE	88-0233
RED HORN/STROBE	88-0277
AMBER HORN/STROBE	88-0337
CLEAR HORN/STROBE	87-0011

INSTALLATION

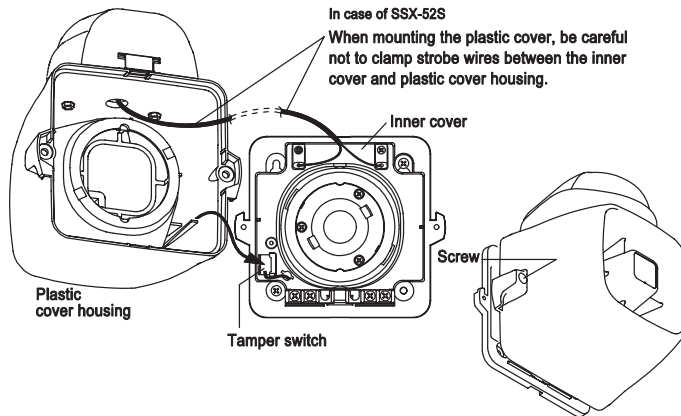
1. Remove the Plastic cover housing by loosening the screws.
2. Mount the aluminum bottom plate direct to the wall or mount BBK-5 outdoor box.
*BBK-5 Back Box not included



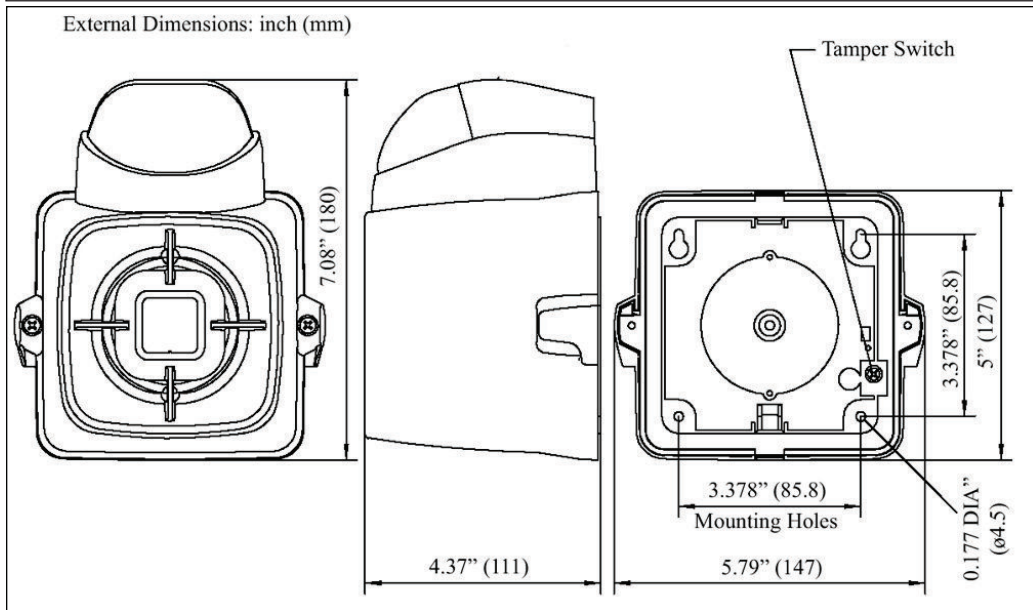
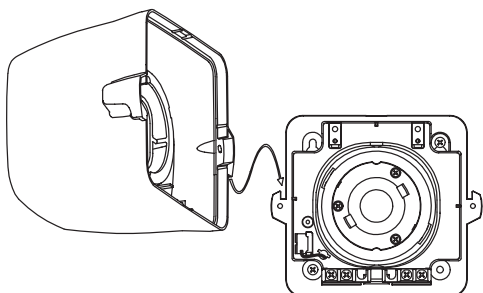
4. Wiring should be made as per drawing, and AWG #12 to #20 should be used. Siren/Strobe combination model installation should be same method of the above.



5. After completion of wiring, mount the plastic cover back and secure with screws. The tamper switch must be pushed by the cover housing, so please place the cover in the correct position.



3. Plastic cover housing can be hooked-up as per drawing.



GENESIS INTERNATIONAL, INC.

1040 FOX CHASE INDUSTRIAL DRIVE
ARNOLD, MISSOURI 63010

PHONE: (636) 282-0011
FAX: (636) 282-2722

WEBSITE:
WWW.GENESIS-INTERNATIONAL.COM

EMAIL:
MAIL@GENESIS-INTERNATIONAL.COM