



GENESIS INTERNATIONAL, INC.

ADAPTABEAACON *Flashing Light With Horn Base*



ADAPTABEAACON HORN / STROBE

The Genesis flashing lights with horns are designed to provide a bright visual indication utilizing special optics within a shatter resistant polycarbonate lens. The polycarbonate double fresnel lens ensures efficient light dispersion. This is accomplished with a series of complementing fresnels that cause the dome to “fill” when the light is operating. Beam distance is also increased with fresnel lenses. Lenses are available in six colors: red, amber, blue, green, magenta, and clear. The unique base design allows horn audibility while maintaining the unit’s weatherproof integrity.

Designed for indoor or outdoor installation. May be direct, 1/2” (13mm) conduit, or box mounted on a 4” (102mm) octagon box. For weatherproof installation, units must be mounted vertically with lens facing up. May be corner mounted indoors using the corner mount bracket, or wall mounted indoors using the wall mount bracket. For additional protection against breakage, use the lens guard.

Genesis flashing lights with horns can advise personnel in manufacturing, process and commercial areas when an operation is starting or stopping. Often used in airport baggage carousels. Usually used for signaling equipment malfunctions, security intrusions, or pinpointing problem locations. Can warn personnel that they are entering a restricted area or an area of high danger. May be used where a smaller light output is desired or where many multiple smaller flashing lights are specified.

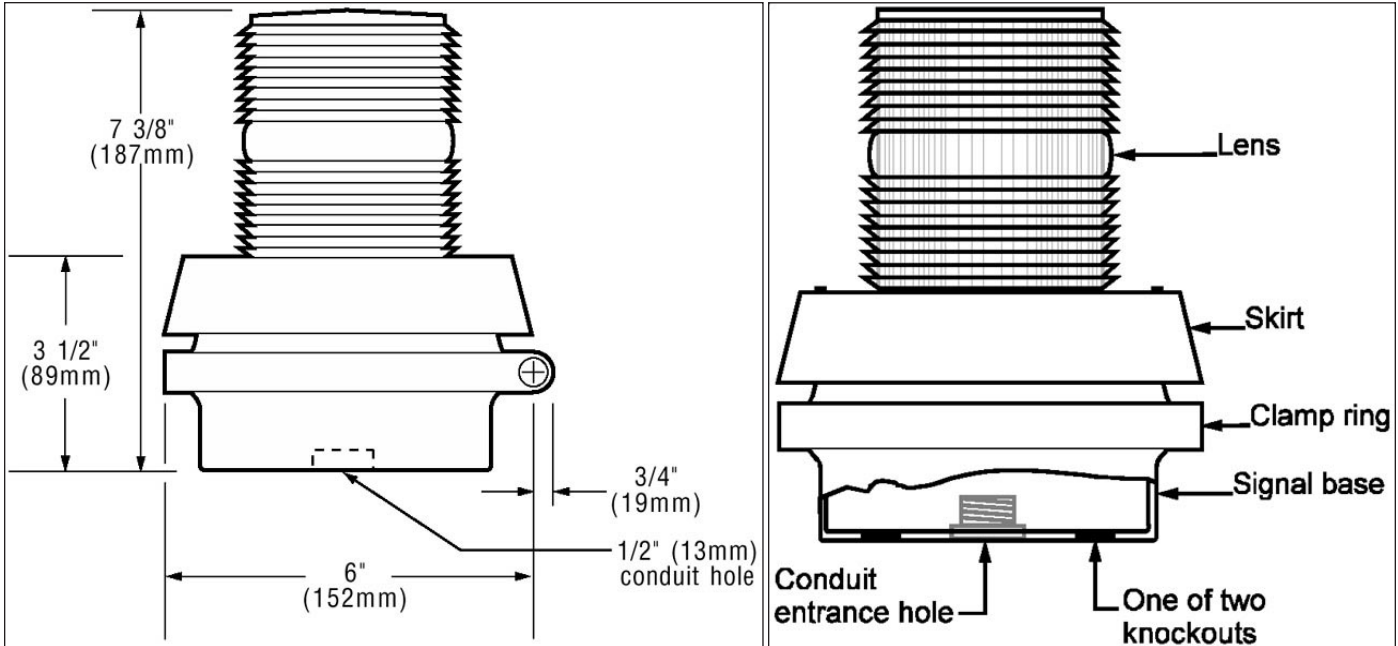
SPECIFICATIONS

LAMP RATING	20 Watts, 402 Lumens 5049 Candle Power 3,180 Hours
ELECTRICAL RATING	24V 50/60 Hz, 1.1 Amps
LENS COLOR	
RED LENS	Part Number 87-0122
AMBER LENS	Part Number 87-0123
BLUE LENS	Part Number 87-0124
HORN	Internal, Base mounted horn rated at 85 dB at 10 feet (3.05 m)
AGENCY APPROVALS	UL 1638 Listed, cUL Listed

FEATURES

Weatherproof
Cast base can be utilized
as junction box
PLC Compatible

DIMENSIONS



GENESIS INTERNATIONAL, INC.

1040 FOX CHASE INDUSTRIAL DRIVE
ARNOLD, MISSOURI 63010

PHONE: (636) 282-0011
FAX: (636) 282-2722

WEBSITE:
WWW.GENESIS-INTERNATIONAL.COM

EMAIL:
MAIL@GENESIS-INTERNATIONAL.COM